

Alchemy

Jewellery

Clane, Co Kildare

By appointment only

087-9363769



By Brian J Eiffe
Goldsmith & Specialist Bespoke Jewellery Designer

www.alchemyjewellery.ie



Background and values

I have been working as a Goldsmith since leaving School in 1986. Having served an apprenticeship in Dublin and worked in the business of Jewellery repairs for 9 years I amassed invaluable experience and knowledge of the many areas of precious metal Jewellery, its construction and design. After some additional training with the Crafts Council of Ireland I have since concentrated on the specific area of Bespoke Design and become one of the foremost Goldsmiths in this particular field where I offer Clients a true custom made and personalised experience. All work is by appointment and the Clients budgets, needs and requirements are worked to in the best possible way with a focus on quality, longevity and sentimental value. When working in the area of repairs you see what normal wear and tear does to a piece of jewellery. I try to make jewellery that will last and hate to see people being duped into buying something as important as a wedding ring that will not last 5 years, let alone a lifetime. The challenge is there more than ever before to meet peoples budgets and to still ensure that they get something of substance and heirloom quality... This is what I try to deliver, One of a kind, beautiful jewellery that will be cherished by generations.

Brian J Eiffe.

www.alchemyjewellery.ie



Corundum species - ruby, blue and purple sapphire....

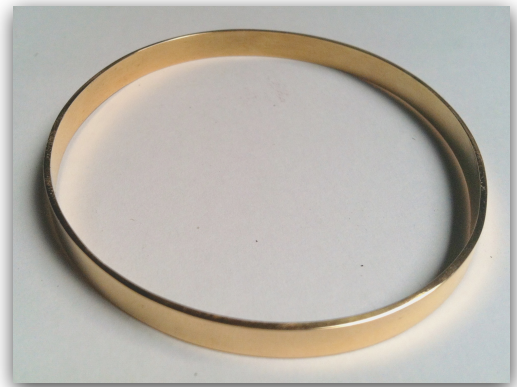


Platinum with diamonds...

www.alchemyjewellery.ie



9ct Capsule pendant



22ct gold bangle

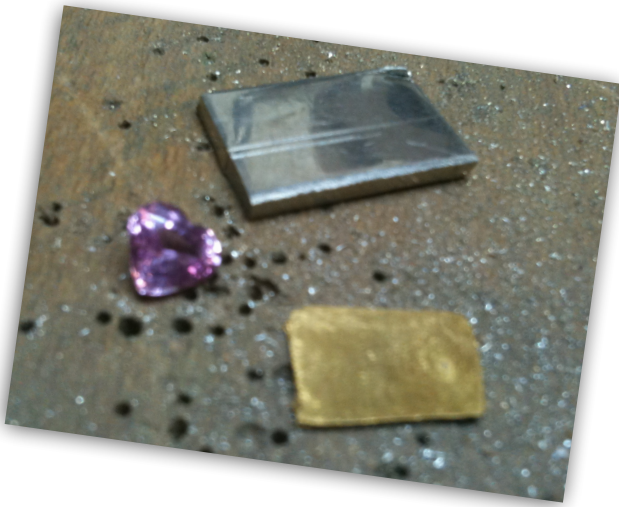


18ct with sapphire / diamond



Like a flowing river....white & yellow gold

To Russia with Love Project



Made for the children's charity "To Russia With Love"
This beautiful piece consists of 18ct white gold, 24ct fine gold, a heart shaped pink sapphire and some small pave set diamonds. The fine gold was inlaid into the piece to create the dolls hair and the body is shaped using forging and filing techniques. The wire that goes around the neck was also forged by hand. The Russian doll raised €6,500 for the charity.



Wedding and Engagement Rings



Made to match



Gents - Palladium with finger print detail
Ladies - Platinum with micro pave diamonds

Budget & Prices – Have a rough budget in mind and generally a middle priced/quality jewellers would be a decent guide to cost. Remember that you get what you pay for and gold and diamonds are worldwide controlled prices so beware of buying in places like Dubai, New York and Antwerp. In my considerable experience I have observed that people rarely get both good prices and good quality when buying abroad... And you also have to consider the after sales service.



Diamond Quality – I personally recommend and use only D,E,F colour Diamonds with a clarity of “Si” minimum. With good to excellent cut grades and symmetry. Preferred lab certs would be IGI , HRD or GIA and forget the rest. See above left. .

Diamond Size – This is something that should be controlled by your budget and should be secondary to quality as a small high quality diamond will give more “bling” than a large, heavily included, yellowish stone. Avoid rings with multiple stones joined to make an illusion of one large stone – these are a disaster waiting to happen and shops simply should not sell them.

Coloured Gemstones – Consider a beautiful Sapphire or Ruby etc as the centrepiece of your ring... They can offer size and beauty at a lower cost to large diamonds. Sapphires come in all colours including green, yellow, pink, purple. Emeralds are beautiful but not the most practical for everyday wear.

Metal Choice – Depending on budgets, lifestyle and whether you are matching another ring, there are arguments for and against each precious metal. Platinum works great as a tough white metal and is not much more expensive than 18ct white gold, Palladium and 9ct yellow gold are particularly good for gents wedding rings due to their affordability and strength. We can advise you well here and beware of some misinformed information that floats around regarding some metals being soft etc All precious metals are soft if not prepared and worked correctly.

Design – All our products are Bespoke so they are made to your specific requirements. No matter how elaborate the design is, a wedding or engagement ring should be made with longevity and practical wearing in mind. If a ring is made with sufficient weight it can become a family heirloom for generations to come.

Brian J Eiffe - Goldsmith & Specialist Bespoke Jewellery Designer

www.alchemyjewellery.ie

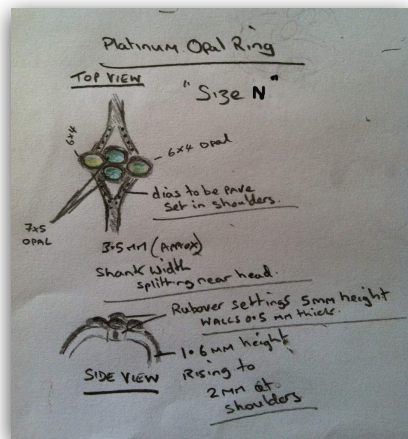


To book an appointment or for more info call Brian on
087-9363769

or Email bjeiffe@alchemyjewellery.ie

www.alchemyjewellery.ie

High quality CAD Design Service Available



Rough sketch - CAD Image - Cast Components



Finished Ring..... Platinum with opals & diamonds

www.alchemyjewellery.ie



Thank you for taking the opportunity to view my work...please forgive the fact that some of the photos are not of the highest quality as I often only get a brief moment to capture the finished product before it goes to the client. Thank you also to my fellow specialist Jewellery trade craftspeople (diamond setter, engraver etc) who consistently do such fantastic work for me and of course my Clients for placing their trust in my work.

Yours Sincerely

Brian J Eiffe

Goldsmith & Specialist Bespoke Jewellery Designer @ Alchemy Jewellery



bjeiffe@alchemyjewellery.ie (353) 087 - 9363769

www.alchemyjewellery.ie